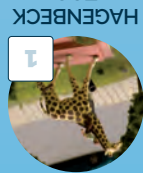
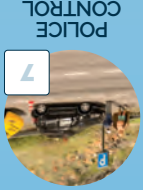


## DID YOU ENJOY YOUR VISIT?

We would be very grateful for your positive review on TripAdvisor, Yelp, Google, Facebook etc.

If there is anything you did not like, we would of course appreciate your personal feedback as well. You can reach out to us via e-mail at: [info@miniatur-wunderland.de](mailto:info@miniatur-wunderland.de)



Find the **PINK LETTERS** we have hidden in these popular scenes! Write down the letters here and enter the solution word later at [www.miniatur-wunderland.de/go/win](http://www.miniatur-wunderland.de/go/win). Get the chance to win exclusive prizes!

## PARTICIPATE & WIN

## OUR SERVICES FOR YOU

### Safely stored



Low battery? Mobile phones and cameras from different manufacturers can be charged at our **lockable charging stations** on the 4<sup>th</sup> floor or in the waiting room. Valuables, backpacks and bags can be safely stored in our **lockers** on the 2<sup>nd</sup> floor. You need a €1 coin as a deposit, a coin changer is available for you.

### Take a break

We kindly ask you not to bring any food or drinks into the exhibition area on the 3<sup>rd</sup> and 4<sup>th</sup> floor. If you would like to consume food and drinks that you have brought with you, you are welcome to eat it in our **bistro area** on the 2<sup>nd</sup> floor. Enjoy burgers, fries and cheesecake in our new **Wunderland Diner**. You can find it over the bridge on the 2<sup>nd</sup> floor / Block L.

### In case of emergency

We are prepared for emergencies: Our **paramedics** are on site at all times to provide you with medical care. There is also a **freely accessible defibrillator** on the 3<sup>rd</sup> floor, which can be operated by all guests in an emergency with the help of step-by-step instructions.

### For families

On the 2<sup>nd</sup> floor, just behind the bistro, you'll find a **lovingly designed play area for children** – complete with a cozy dining space for the whole family. Just a few steps away, there's also a **quiet relaxation corner**, a well-equipped baby changing station, and a **small kitchenette with a kettle and microwave**. This makes it easy to warm up baby food you've brought along. Another **changing station** is available on the 3<sup>rd</sup> floor near the restrooms.

### Accessibility

We try to make the visit to the Wunderland as accessible as possible. The entire facility is accessible by wheelchair, even if the view is impaired in some places. Unfortunately, some areas are not wheelchair accessible; these include the lockers and also the backstage tours. If necessary, **you can borrow a wheelchair from the cloakroom**. You can reach all floors easily with our **lifts**. **Disabled toilets are located in both buildings and are signposted accordingly.**

Model area	1.694 m <sup>2</sup>
Theme worlds	12
Track length	16,491 m
Trains	1,231
Wagons	over 12,000
Longest train	14,51 m
Signals	1,403
Switches	3,627
Computers	59
LEDs	approx. 521,500
Figures	157,000
Trees	157,000
Construction time	over 1,200,000 h
Construction costs	45 Mio. Euro

## FACTS & FIGURES

Let your imagination run free at Miniatur Wunderland: a day lasts just 15 minutes, thanks to the simulated rhythm of day and night. Once dusk sets in, the installation is bathed in the enchanting light of more than 500,000 LEDs. A very special attraction is the world's tiniest civil aviation airport: featuring more than 40 planes and the corresponding ground staff, the 125 square metres installation may well be the most elaborate flight simulation anywhere.

In April 2024, the Principality of Monaco and its spectacular Formula-1 race track. But that's not all: after Rio de Janeiro and Patagonia, the Atacama Desert, the Andes and the rainforest will become the next parts of South America and the Caribbean, as well as parts of Asia are to be created in the coming years. And Wunderland never runs out of ideas.

Visitors worldwide have already voted Wunderland Germany's most popular tourist attraction five times! embarked on a discovery tour on a scale of 1:87 to date.

## WHAT IS MINIATUR WUNDERLAND?

## Welcome TO THE WUNDERLAND

The Wunderland now extends over two buildings and many, many floors. It's easy to lose track of everything. We hope that this guide will help you finding your way through the exhibition!

You enter the Wunderland in Block D on the 2<sup>nd</sup> floor. There you will find the shop, our bistro and later also the exit.

Most of the exhibition is located on the 3<sup>rd</sup> & 4<sup>th</sup> floor of the main building (Block D).

The bridge on the 3<sup>rd</sup> floor connects the „old“ Wunderland with the new building and the new world; our South America exhibition with Rio de Janeiro and Patagonia.

Our special exhibitions are located in the new building (Block L) on the 2<sup>nd</sup> & 4<sup>th</sup> floors, the new Wunderland Diner is on the 2<sup>nd</sup> floor.

On the ground floor, our virtual reality experience YULLBE WUNDERLAND is ready to shrink you down to 1:87.



Experience the Wunderland up close as a model figure in our fascinating virtual reality adventures! Move freely through the miniature world in 10 or 30 minutes – developed together with the Europa-Park.

On the ground floor, technology from Hollywood meets the creativity of the Miniatur Wunderland!

## SHRINK YOURSELF INTO THE WUNDERLAND

**BURGER & CAFE**

If you get an appetite there is a selection of delicious burgers – also vegan – as well as cheesecake and coffee in the diner on the 2<sup>nd</sup> floor!

Interactive entertainment is provided in Block L: a digital game carpet and sandbox are located on both the 4<sup>th</sup> and 2<sup>nd</sup> floors. Here, inter-active worlds can be built and manipulated.

Our latest special exhibition „Wunderland 3D Paintings“ on the 2<sup>nd</sup> floor combines classics of art history with the creativity of our model builders.

The special exhibitions „The Divided City“, „The History of Our Civilization“, „Sauwolt“ and our „20th Anniversary“ exhibition can be discovered on the 4<sup>th</sup> floor.

Be sure to visit our new building in Block L – over the bridge! It is packed with breathtaking models, exciting technology, and delicious food. Experience the Wunderland in all its diversity and don't miss a thing!

The new space gives us enough room to complete South and Latin America over the next few years. We already started off with Rio de Janeiro and Patagonia on the 3<sup>rd</sup> floor – now it's time to work on the Atacama Desert and the Rainforest!

**Spectacular technology: STORMY SEA IN THE DRAKE PASSAGE**

**Block L / OVER THE BRIDGE**

**THE NEW SPACE**

Block L / OVER THE BRIDGE

**THE NEW SPACE**

## OUR SERVICES FOR YOU

### Safely stored



Low battery? Mobile phones and cameras from different manufacturers can be charged at our **lockable charging stations** on the 4<sup>th</sup> floor or in the waiting room. Valuables, backpacks and bags can be safely stored in our **lockers** on the 2<sup>nd</sup> floor. You need a €1 coin as a deposit, a coin changer is available for you.

### Take a break

We kindly ask you not to bring any food or drinks into the exhibition area on the 3<sup>rd</sup> and 4<sup>th</sup> floor. If you would like to consume food and drinks that you have brought with you, you are welcome to eat it in our **bistro area** on the 2<sup>nd</sup> floor. Enjoy burgers, fries and cheesecake in our new **Wunderland Diner**. You can find it over the bridge on the 2<sup>nd</sup> floor / Block L.

### In case of emergency

We are prepared for emergencies: Our **paramedics** are on site at all times to provide you with medical care. There is also a **freely accessible defibrillator** on the 3<sup>rd</sup> floor, which can be operated by all guests in an emergency with the help of step-by-step instructions.

### For families

On the 2<sup>nd</sup> floor, just behind the bistro, you'll find a **lovingly designed play area for children** – complete with a cozy dining space for the whole family. Just a few steps away, there's also a **quiet relaxation corner**, a well-equipped baby changing station, and a **small kitchenette with a kettle and microwave**. This makes it easy to warm up baby food you've brought along. Another **changing station** is available on the 3<sup>rd</sup> floor near the restrooms.

### Accessibility

We try to make the visit to the Wunderland as accessible as possible. The entire facility is accessible by wheelchair, even if the view is impaired in some places. Unfortunately, some areas are not wheelchair accessible; these include the lockers and also the backstage tours. If necessary, **you can borrow a wheelchair from the cloakroom**. You can reach all floors easily with our **lifts**. **Disabled toilets are located in both buildings and are signposted accordingly.**

## TRAVEL GUIDE

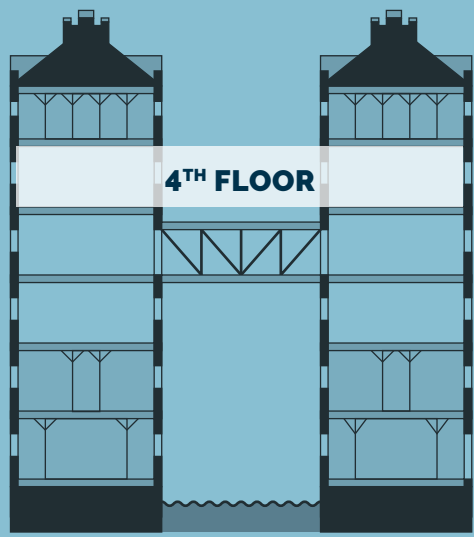
SITE PLAN · INFORMATIONS · TIPS

**YOUR USEFUL COMPANION!**

So that you're always on the right track.

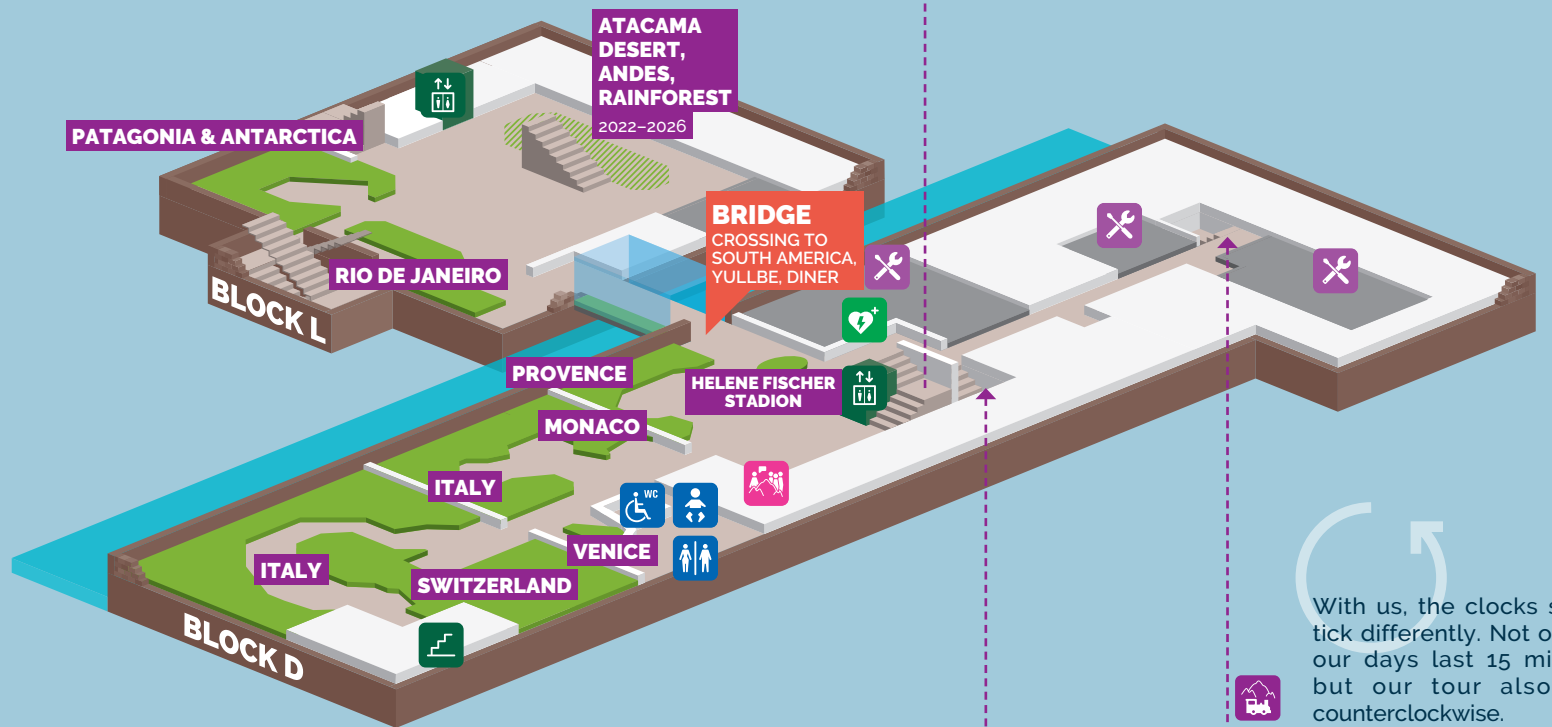
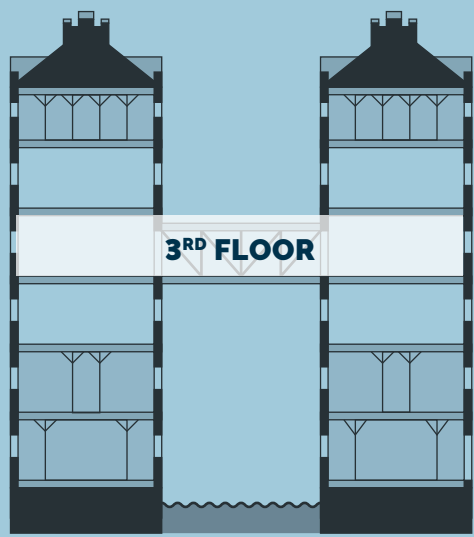
**INCLUSIVE LARGE MAP!**

Miniatur Wunderland HAMBURG

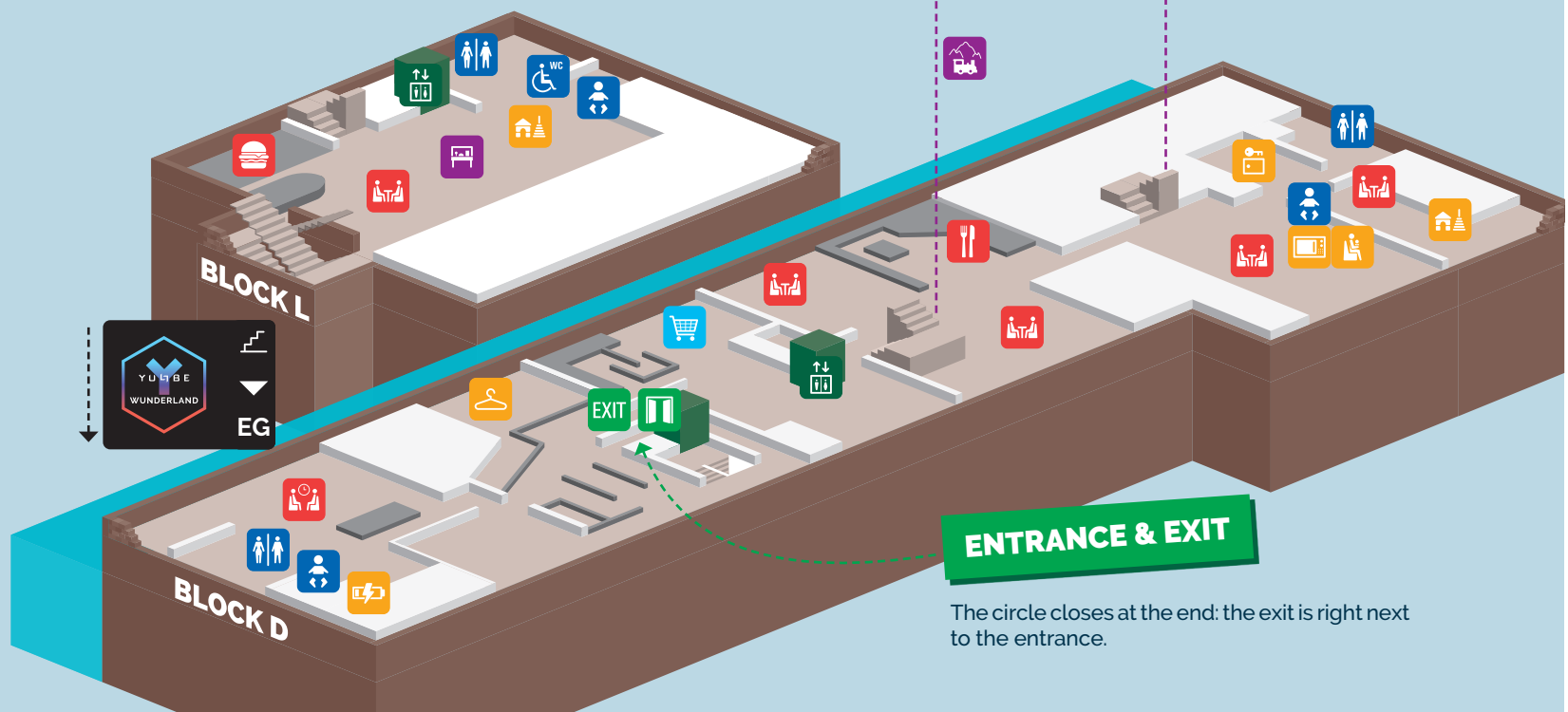
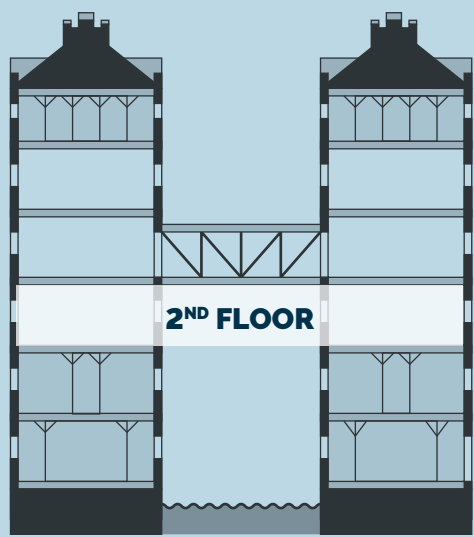


**USEFUL TIP!**

The perfect start for your journey in the Wunderland is the America section. From there, just keep going along the edge of the exhibition, through the Alps, all the way to Italy. From there you go over the bridge directly to South America: Rio de Janeiro and Patagonia are already waiting for you!



With us, the clocks simply tick differently. Not only do our days last 15 minutes, but our tour also runs counterclockwise.



**ENTRANCE & EXIT**

The circle closes at the end: the exit is right next to the entrance.

## SHARE YOUR VISIT!

Taking photos and filming is absolutely permitted and encouraged! We appreciate every shared memory of your visit.

... OR FOLLOW US ON SOCIAL MEDIA!  
Whether YouTube, Facebook, Instagram or TikTok – we'll deliver the best of Wunderland straight to your screen!

#MINIATURWUNDERLAND

## EXPERIENCE THE WUNDERLAND backstage

Would you like to take a look behind and beneath the scenes and discover the many hidden details? Have you always been curious about the exciting history of the Wunderland and the fascinating technology?  
Then come and visit us at the tour meeting point on the 3<sup>rd</sup> floor – we are happy to inform you about our tour offers.

## LEGEND – SITE PLAN

	LIFT		DISABLED TOILET		CLOAKROOM
	EXIT		TOILETS		LOCKERS
	DEFIBRILLATOR		DIAPER-CHANGING ROOM		CHARGING STATION
	BISTRO		EXHIBITION		PLAY CORNER
	WUNDERLAND DINER BURGER & CAFÉ		SPECIAL EXHIBITION		MICROWAVE
	SEATING		WORKSHOP		NURSING CORNER
	WAITING ROOM		GUIDED TOURS		YULLBE WUNDERLAND GROUND FLOOR/BLOCK L
	SHOP		CONTROL STATION		